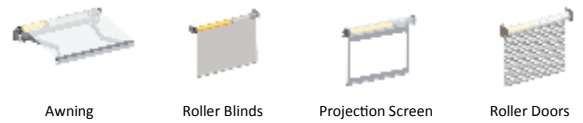


**S: Standard
Non Manual**

NT4550S



Non Manual

45mm in diameter, 8Nm—50Nm

CE, CCC, and TUV approved

Suitable for Window Blinds, Garage Doors, Awnings and small Roller Shutters up to 65 Kilos



Dimension Drawing



Outlook

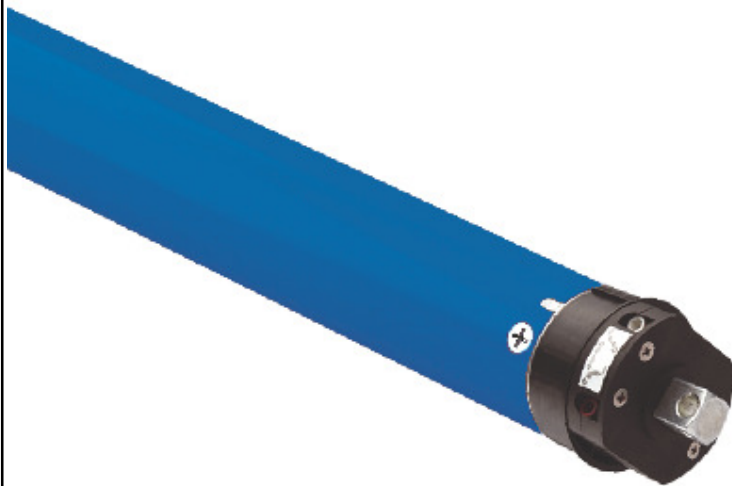


Technical Specifications

	Rated Torque (Nm)	Rated Voltage (V)	Rated Frequency (Hz)	Rated Power Input (W)	Tube Diameter (mm)	Rated Current (A)	Running Time (min)	Rated Speed (rpm)	Protection Index (IP)	Insulation Class
NT45S Non Manual	8N.m	230V	50HZ	158W	45mm	0.70A	S2 4min	12/17rpm	Ip44	Class F
	10N.m	230V	50HZ	162W	45mm	0.75A	S2 4min	12/17rpm	Ip44	Class F
	15N.m	230V	50HZ	170W	45mm	0.78A	S2 4min	12/17rpm	Ip44	Class F
	20N.m	230V	50HZ	178W	45mm	0.80A	S2 4min	12/17rpm	Ip44	Class F
	30N.m	230V	50HZ	235W	45mm	1.05A	S2 4min	12rpm	Ip44	Class F
	40N.m	230V	50HZ	276W	45mm	1.23A	S2 4min	12rpm	Ip44	Class F
	50N.m	230V	50HZ	282W	45mm	1.25A	S2 4min	12rpm	Ip44	Class F

**S: Standard
Non Manual**

NT59S



Roller Doors

Non Manual

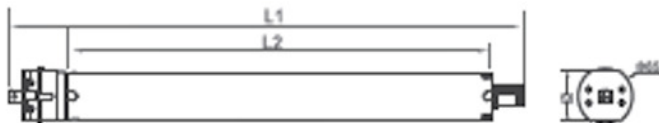
59mm in diameter, 60Nm—150Nm

CE, CCC, and TUV approved

Suitable for Large Garage Doors and Industrial Roller Shutters up to 205 Kilos



Dimension Drawing



Outlook



Technical Specifications

	Rated Torque	Rated Voltage	Rated Frequency	Rated Power Input	Tube Diameter	Rated Current	Running Time	Rated Speed	Protection Index	Insulation Class
	(Nm)	(V)	(Hz)	(W)	(mm)	(A)	(min)	(rpm)	(IP)	Class H
NT59S Non Manual	60N.m	230V	50HZ	308W	59mm	1.36A	S2 4min	15rpm	Ip44	Class H
	80N.m	230V	50HZ	332W	59mm	1.44A	S2 4min	15rpm	Ip44	Class H
	100N.m	230V	50HZ	342W	59mm	1.53A	S2 4min	9rpm	Ip44	Class H
	120N.m	230V	50HZ	348W	59mm	1.58A	S2 4min	9rpm	Ip44	Class H
	150N.m	230V	50HZ	352W	59mm	1.62A	S2 4min	9rpm	Ip44	Class H

**S: Standard
Non Manual**

NT92S



Roller Doors



Non Manual

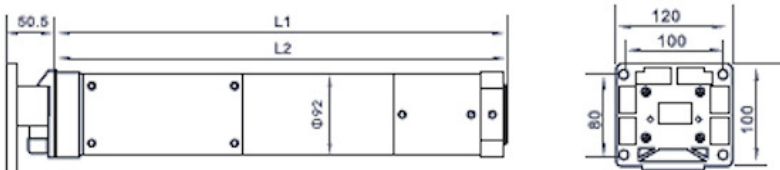
92mm in diameter, 140Nm—330Nm

CE, CCC, and TUV approved

Suitable for Large Industrial Roller Shutters
up to 425 Kilos



Dimension Drawing



Outlook

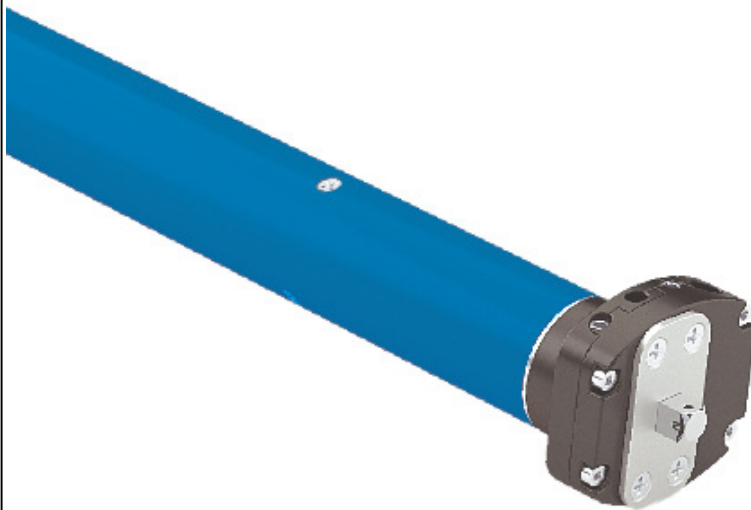


Technical Specifications

	Rated Torque	Rated Voltage	Rated Frequency	Rated Power Input	Tube Diameter	Rated Current	Running Time	Rated Speed	Protection Index	Insulation Class
	(Nm)	(V)	(Hz)	(W)	(mm)	(A)	(min)	(rpm)	(IP)	
NT92S	140N.m	230V	50HZ	508W	92mm	2.60A	S2 4min	12rpm	Ip44	Class H
	180N.m	230V	50HZ	626W	92mm	2.80A	S2 4min	12rpm	Ip44	Class H
	230N.m	230V	50HZ	830W	92mm	3.80A	S2 4min	12rpm	Ip44	Class H
	300N.m	230V	50HZ	920W	92mm	4.20A	S2 4min	9rpm	Ip44	Class H
	330N.m	230V	50HZ	980W	92mm	4.50A	S2 4min	9rpm	Ip44	Class H

Manual

NT45



Manual

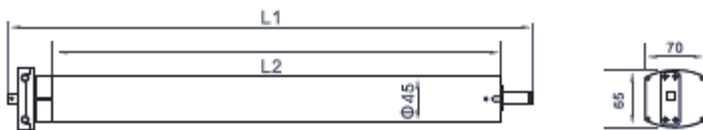
45mm in diameter, 8Nm—50Nm

CE, CCC, and TUV approved

Suitable for Window Blinds, Garage Doors, Awnings and small Roller Shutters up to 65 Kilos



Dimension Drawing



Outlook

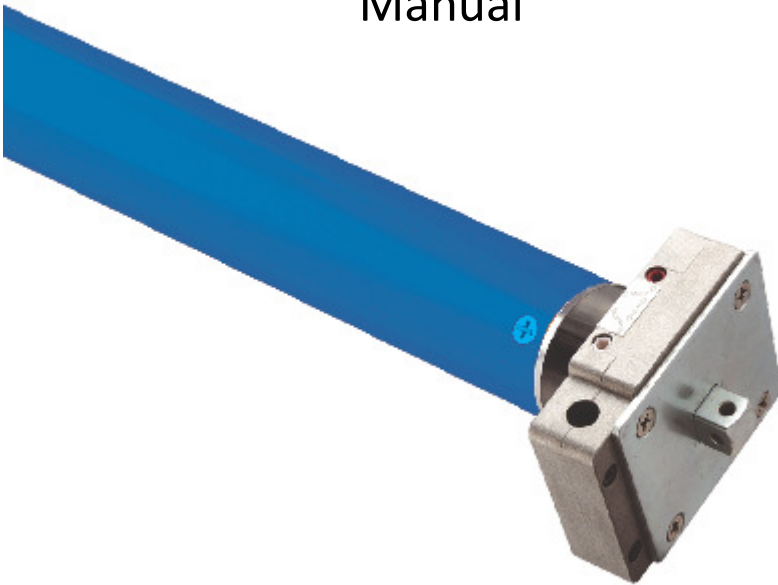


Technical Specifications

	Rated Torque (Nm)	Rated Voltage (V)	Rated Frequency (Hz)	Rated Power Input (W)	Tube Diameter (mm)	Rated Current (A)	Running Time (min)	Rated Speed (rpm)	Protection Index (IP)	Insulation Class
NT45 Manual	8N.m	230V	50HZ	158W	45mm	0.70A	S2 4min	12/17rpm	Ip44	Class F
	10N.m	230V	50HZ	162W	45mm	0.75A	S2 4min	12/17rpm	Ip44	Class F
	15N.m	230V	50HZ	170W	45mm	0.78A	S2 4min	12/17rpm	Ip44	Class F
	20N.m	230V	50HZ	178W	45mm	0.80A	S2 4min	12/17rpm	Ip44	Class F
	30N.m	230V	50HZ	235W	45mm	1.05A	S2 4min	12rpm	Ip44	Class F
	40N.m	230V	50HZ	276W	45mm	1.23A	S2 4min	12rpm	Ip44	Class F
	50N.m	230V	50HZ	282W	45mm	1.25A	S2 4min	12rpm	Ip44	Class F

Manual

NT59



Manual

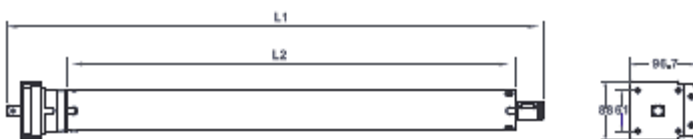
59mm in diameter, 60Nm—150Nm

CE, CCC, and TUV approved

Suitable for Large Garage Doors and Industrial Roller Shutters up to 205 Kilos



Dimension Drawing



Outlook



Technical Specifications

	Rated Torque	Rated Voltage	Rated Frequency	Rated Power Input	Tube Diameter	Rated Current	Running Time	Rated Speed	Protection Index	Insulation Class
	(Nm)	(V)	(Hz)	(W)	(mm)	(A)	(min)	(rpm)	(IP)	Class H
NT59 Manual	60N.m	230V	50HZ	308W	59mm	1.36A	S2 4min	15rpm	Ip44	Class H
	80N.m	230V	50HZ	332W	59mm	1.44A	S2 4min	15rpm	Ip44	Class H
	100N.m	230V	50HZ	342W	59mm	1.53A	S2 4min	9rpm	Ip44	Class H
	120N.m	230V	50HZ	348W	59mm	1.58A	S2 4min	9rpm	Ip44	Class H
	150N.m	230V	50HZ	352W	59mm	1.62A	S2 4min	9rpm	Ip44	Class H

Manual

NT92



Roller Doors



Manual

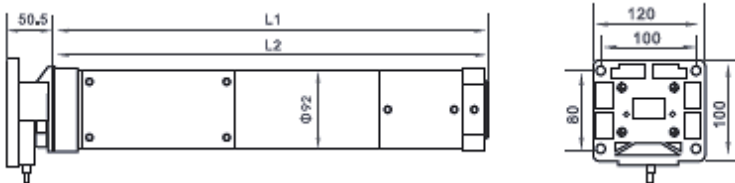
92mm in diameter, 140Nm—330Nm

CE, CCC, and TUV approved

Suitable for Large Industrial Roller Shutters
up to 425 Kilos



Dimension Drawing



Outlook



Technical Specifications

	Rated Torque	Rated Voltage	Rated Frequency	Rated Power Input	Tube Diameter	Rated Current	Running Time	Rated Speed	Protection Index	Insulation Class
	(Nm)	(V)	(Hz)	(W)	(mm)	(A)	(min)	(rpm)	(IP)	
NT92	140N.m	230V	50HZ	508W	92mm	2.60A	S2 4min	12rpm	Ip44	Class H
	180N.m	230V	50HZ	626W	92mm	2.80A	S2 4min	12rpm	Ip44	Class H
	230N.m	230V	50HZ	830W	92mm	3.80A	S2 4min	12rpm	Ip44	Class H
	300N.m	230V	50HZ	920W	92mm	4.20A	S2 4min	9rpm	Ip44	Class H
	330N.m	230V	50HZ	980W	92mm	4.50A	S2 4min	9rpm	Ip44	Class H

NT4530PB 30nm Push Button Limit Tubular Motor



60/70mm Octagonal Rigid Eye

NT4550PB 50nm Push Button Limit Tubular Motor



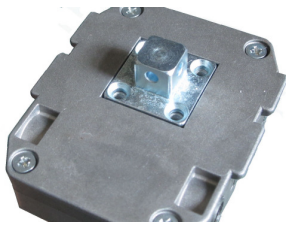
60/70mm Octagonal Rigid Eye

Mechanical motor with manual override and push button	Rated Torque (N.m)	Non-loaded speed (r/min)	Non-loaded power (W)	Non-loaded current (A)	Tubular Diameter (mm)	Running time (min)	Protection index (IP)	Crown Tube Diameter & Load Capacity	
								Dia of crown tubeø60 (Kg)	Dia of crown tubeø70 (Kg)
NT4530PB	30	12	182	0.85	45	4	IP44	71	61
NT4550PB	50	12	234	1.04	45	4	IP44	119	102

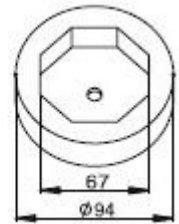
NT59110 110nm Tubular Motor with manual over-ride



Complete with drive and limit collars, flush fitting backing plate and for retro-fit boss, star bracket and split pin



Flush Fitting Backing Plate



97mm/70mm Octagonal Combination
Limit Collar and Drive Wheel

Also available 94mm/70mm

Technical Parameters

	Rated Torque	Non-loaded speed	Rated Voltage	Frequency	Non-loaded power	Non-loaded current	Tubular Diameter	Max number of turns	Running time	Protection index	Length L1/L2	Net weight
	(N.m)	(r/min)	(V)	(Hz)	(W)	(A)	(mm)	(turn)	(min)	(IP)	Mm	(Kg)
NT59110	110	12	110/220	60/50	360/310	3.60/1.55	59	26	4	IP44	730/750	7.6

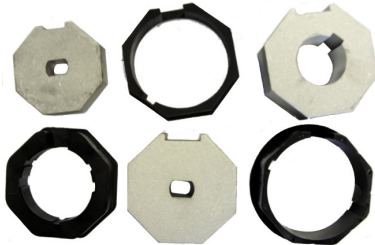
CROWNS AND ADAPTORS

CROWNS & ADAPTORS STANDARD



- NT4594** 94mm to suit NT4550
- NT4597** 97mm to suit NT4550
- NT5994** 94mm to suit NT59100/NT59140
- NT5997** 97mm to suit NT59100/NT59140
- NT9294** 94mm to suit NT92230/NT92300/NT92330
- NT9297** 97mm to suit NT92230/NT92300/NT92330
- NT9212** 120mm to suit NT92230/NT92300/NT92330

CROWNS & ADAPTORS OCTAGONAL



- NT4560** 60mm Octagonal to suit NT4550
- NT4570** 70mm Octagonal to suit NT4550
- NT5970** 70mm Octagonal to suit NT59100/NT59140

DUPRAT ADAPTOR



- NT0061** 62mm to suit NT4550
- NT0062** Drive End 62mm to suit NT4550
- NT0063** Shoe for 89mm use with NT0064 to suit NT4550
- NT0064** Drive End 89mm to suit NT59100/NT59140
- NT0065** 89mm to suit NT59100/NT59140
- NT0066** Drive End 89mm to suit NT4550

Universal Joints & Crook Handles



- NT0040** Universal Joint and Plate Manual Override
- NT0040A** Universal Joint 500mm x 7mm Hex c/w Clip & Rigid Eye
- NT0040B** Universal Joint 500mm x 7mm Hex. Plastic Coated
- NT0040C** Universal Joint 500mm x 7mm Hex. Zinc Plated
- NT0040D** Universal Joint Only



- NT0042** Crook Handle - 2 MTRS
- NT0042A** Crook Handle - 1.5 MTRS
- NT0042B** Crook Handle - 1.2 MTRS
- NT0042C** Crook Handle - T910784 Universal Type

- NT0044** Standard Rigid Eye
- NT0044B** Extended Rigid Eye 225mm Long 7mm Hex
- NT0044C** Extended Rigid Eye 325mm Long 7mm Hex
- NT0044F** Extended Rigid Eye 225mm Long 8mm Hex (for 110Nm Motor)

TUBE AND MOTOR ASSEMBLY'S



Tubes are supplied with Lost Bobbins, or Shafts & Discs pre welded. Our standard Lost Bobbin is manufactured with a pre-drilled shaft and fitted with 2 bearings for smooth operation. We can supply tubes fitted with any combination including cast end blocks, steel bearing blocks, and spring anchors.



All tubes are supplied pre-drilled and fitted with either Rivnuts or welded nuts, to allow easy fitting of the lathe curtain.

Tubes can be supplied either primer painted finish or in galvanised steel and are available in 4" 9swg, 4" 16swg or 5" 10swg



Tubes are prepared to accept all NVM motors, from 50nm to 230nm, pre-slotted to accept crowns and pre-drilled to suit the drive wheel adaptors. All drive wheel adaptors are pre-drilled and tapped for easy installation.

Motors are supplied boxed separately to avoid transit damage and all tubes are supplied with tube ends in protective wrapping.

We offer a weekly delivery service using our own vehicles or if required, a next day carrier service for emergencies.